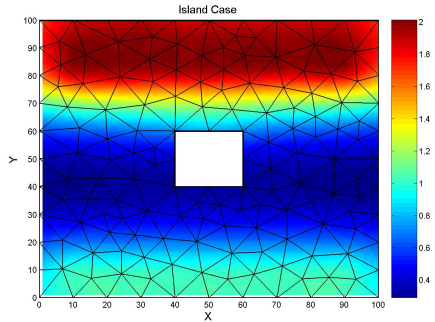




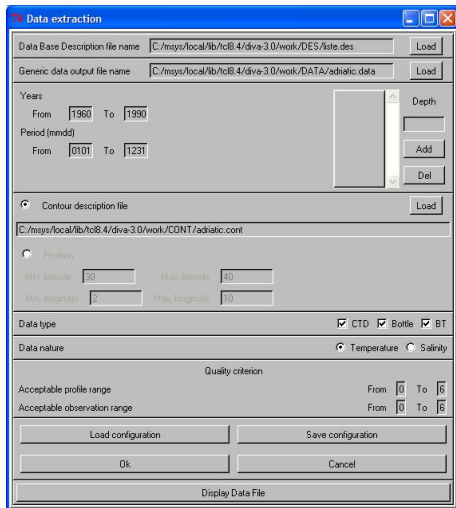
- Graphical interface =  
.tcl files + fortran executables
- Language = Tcl/tk
- Linux → ok  
Windows → Msys or Cygwin



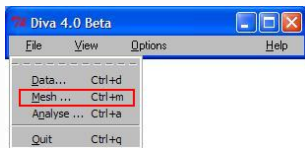
# DATA EXTRACTION



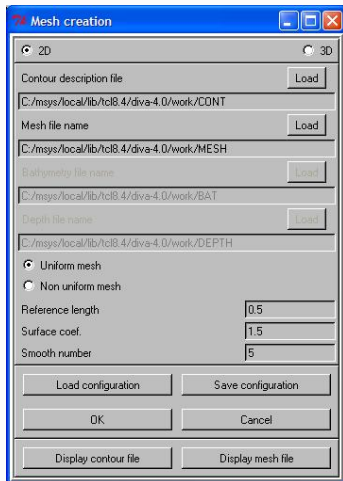
- Aim : extraction from DB.
- Input : contour, DB description file.
- Parameters : times, depth, positions, data nature, data type, quality criterion, ...
- Output : long., lat., value.

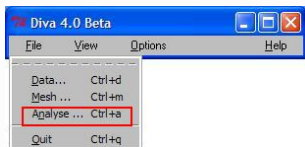


# MESH GENERATION

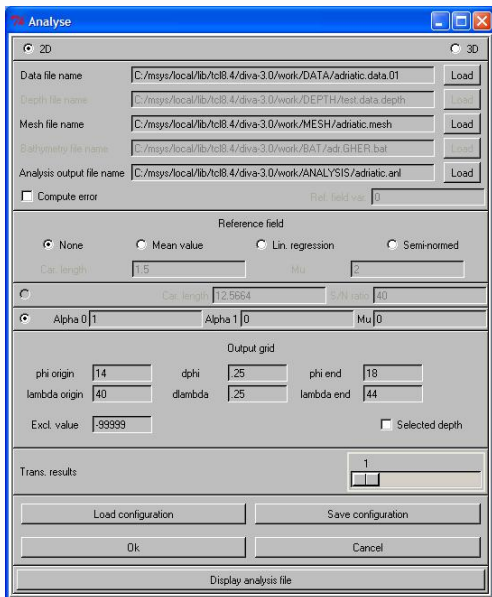


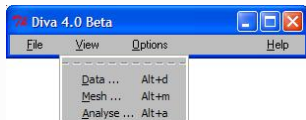
- Input : contour file.
- Parameters : 2D/ 3D  
uniform/ non uniform  
reference length, surface  
coefficient, smooth number.
- Output : mesh file → mesh  
topology





- Input : data + mesh.
- Parameters : reference field, output grid
- Output : analysed field + error map.

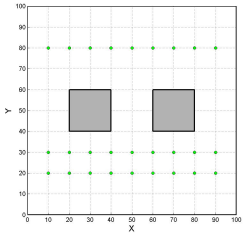




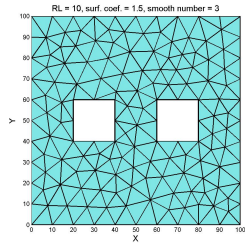
- direct visualization with interface : P1Plot → incompatibility
- contour and mesh → Matlab script `meshvisu.m`
- analysed field and error map → Matlab script
- NetCDF output → `Ncview`, `Ncbrowse`.

# EXAMPLES

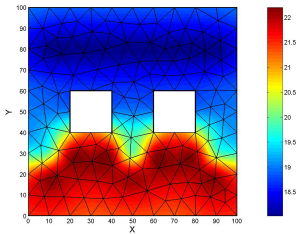
## Data + Contour



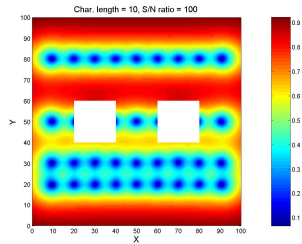
## Mesh



## Analysis



## Error



# CONCLUSIONS

- + easy and quick to use
- + save/ load configuration
- + still evolving product
- visualization to be coupled with the interface
- NetCDF output
- ... → I expect your feedback !!

